

"Vaporize politicians! Zap skinheads!"

- USA TODAY

GayBlade™

For **Macintosh®** and **PC computers!**

GayBlade takes players into an ancient and dark dungeon on a terrifying Quest -- to rescue Empress Nelda from the disgusting right-wing creatures inhabiting the dungeon.

Fortunately, the rescue party is made up of heroic Drag Queens, Queers, Lesbians and others who will stop at nothing to get their beloved Empress back to luxurious Castle GayKeep. But can they succeed when so many others have failed before them?

GayBlade is an exciting and addictive game which will keep you glued to your computer for hours as you explore the dungeon looking for weapons, gold and magic items while fending off the horrible homophobic creatures such as: TV Evangelists, Sleazy Publishers, Evil Politicians, Hell Crabs, and many more.

A game of both skill and luck, GayBlade has original full color graphics, digitized sound, and can be played for hours of excitement!

"GayBlade is easy to learn, fascinating to play...a definite must for your collection"

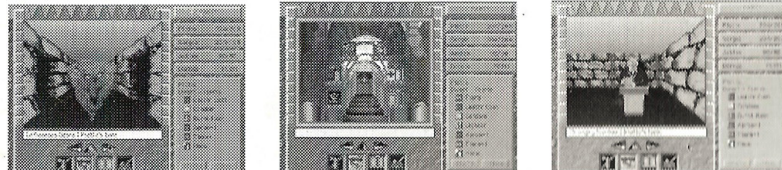
— Kentucky Gay & Lesbian Newspaper

"One of the most fun games ever created for [Macintosh & PC computers]!"

— Chicago Windy City Times

"Neat audio, music and images ...with built in sense of humor."

— San Francisco Bay Area Reporter



Actual screen shots in full color. Featuring original graphics, digitized sound effects, and more!

GayBlade is available in stores near you, or by ordering direct from RJ Best, Inc. by sending a check or money order for \$39.95 plus \$2.50 handling (CA. residents add appropriate sales tax). To order, or for more information call (415) 252-6464. GayBlade may be played on either Apple Macintosh®/Performa® computers or PCs running Microsoft Windows® 3.1 or higher. Specify which system when ordering.



RJ Best, Inc. • 5214-F Diamond Heights Blvd., Suite 701 • San Francisco, CA 94131 • (415) 252-6464

GayBlade™

World's wackiest gay & lesbian spoof on dungeon fantasy computer games!

For Macintosh® & Windows® computers



Empress Nelda has been captured. You must rescue her!

So get your Apron out, grab your Gold Tiara, and

unsheathe the dreaded Turbo Blo Dryer.

You're going to war...

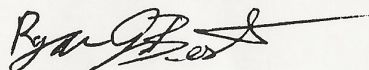
PC Version 2.5!
(requires Windows 3.1)

A few notes about GayBlade:

GayBlade, created and developed by Ryan Best over a year's time, is an amusing and addictive gay & lesbian spoof on traditional dungeon-style fantasy role-playing games.

The PC version (which requires Microsoft Windows 3.1) was "ported" over to PCs by Intelligent Software Solutions, Inc. Both companies are based out of San Francisco.

We hope you enjoy GayBlade and find it as much fun to play as it was to create.



Ryan Best
President, RJ Best, Inc.

This manual and the software described herein are copyrighted, with all rights reserved. This manual and the software may not be copied, in whole or in part, without written consent of RJ Best, Inc., except to make a backup copy as specified in the software license agreement.

RJ Best, Inc. makes no warranty or representation, either expressed or implied, with respect to software, its quality, performance, merchantability, or fitness for a particular purpose. As a result, this software is sold "as is," and you the purchaser are assuming the entire risk as to its quality and performance.

In no event will RJ Best, Inc. be liable for direct, indirect, special, incidental, or consequential damages resulting from any defect in the software or its documentation, even if advised of the possibility of such damages. RJ Best, Inc. does not warrant that the software will function correctly in a multi-user environment, or in the case of user changes to the operation system through 'screen savers', 'inits' or any other non-standard changes.

Macintosh® is a registered trademark of Apple Computer, Inc., Windows® is a registered trademark of Microsoft Corporation, GayBlade™ is a trademark of RJ Best, Inc.

© 1992 Copyright RJ Best, Inc., Inc. All Rights Reserved.
Printed in the United States.

Creature Appendix

Levels (exp./gold)
2 = 275/50
3 = 550/100
4 = 825/150
5 = 1100/200

NAME	LVL	ATRB	DMG	DEF	NAME	LVL	ATRB	DMG	DEF
Angry Fundie	1	0	4	12	Devil Dog	7	7	30	50
Flux of Scab	1	0	4	15	Music Censor	7	7	25	45
Redneck	1	0	6	13	Slimy Leech	7	2	35	35
Homophobic Cop	1	0	5	12	Punk	7	3	35	40
FBI Probe	1	0	4	15	Street Gang	8	3	40	45
TV Preacher	1	0	5	13	Low-Life Aryan	8	1	45	40
Demon Flea	1	0	3	14	Book Burner	8	6	45	45
Teething Body Crab	1	1	4	12	Mutant Body Crab	8	2	45	50
Crazed Zealot	2	0	10	15	Pharmaceutical Exec	8	4	50	40
Two-Star General	2	0	9	12	Mutant Kitten	8	0	50	55
Evil Court Justice	2	0	7	25	Family Value	8	1	50	45
Crawling Scabie	2	0	10	17	Cruel Colonel	8	6	50	50
Screaming Mite	2	1	12	11	Screaming Hag	9	0	55	60
Pro-Lifer	2	0	6	25	Spitting Spider	9	6	60	60
Dark Lice	2	0	6	17	Crooked Trick	9	2	60	55
Southern Senator	2	0	8	25	Spineless Politico	9	6	55	55
Rabid Marine	3	0	20	15	Giant Terrier	9	2	60	50
Scout Master	3	0	17	17	Street Tough	9	3	60	55
Pulpit Pounder	3	0	15	30	Bible Thumper	9	1	40	65
Hellish Crab	3	1	10	25	Suicidal Tendency	9	2	60	55
Nightmare	3	0	25	6	Filthy Bar Slime	10	3	65	60
Network Censor	3	0	17	25	Homophobic Jock	10	0	60	63
Age Spot	3	1	30	5	Poison Rash	10	6	50	65
Pit Bull	3	7	20	15	Bleeding Heart	10	0	65	55
Guilt Trip	4	2	20	15	Evil Ex-President	10	7	60	65
Morning Breath	4	2	20	15	Queer Basher	10	4	40	67
Sleazy Publisher	4	6	25	20	Loose Sheldon	10	2	20	100
Fascist	4	3	22	20	Marine Recruit	10	1	65	65
Harassing Employer	4	1	20	30	Grand Dragon	11	3	70	65
Cursed Ayatollah	4	1	20	18	Ice Roach	11	7	65	70
Demonic Deacon	4	7	15	35	Witch Hunt	11	75	0	65
Winged Pit Bull	4	1	20	25	Last Soul	11	7	35	80
Giant Head Lice	5	2	25	25	Irate Bouncer	11	2	70	78
Bullie	5	3	25	20	Tapeworm	11	1	75	75
Armed Thug	5	3	30	15	Bureaucrat	11	4	37	85
Killer Poodle	5	1	30	27	3-Star General	11	6	70	80
Homophobic Yuppie	5	0	25	30	Young Republican	12	2	75	85
Two-Faced Mayor	5	0	25	15	False Prophet	12	5	80	80
Hideous Scabie	5	1	2	13	Slut	12	5	75	85
Frat Pledge	5	3	15	23	Hypocrit	12	0	90	90
Holy Roller	6	0	30	25	Racist Marine	12	6	100	100
Drunken Sailor	6	0	35	30	Giant Rat	12	3	85	95
Pushy Report	6	2	35	30	Nanahcub Patrol	12	4	94	102
Circling Hornet	6	1	30	38	Prickly Wart	12	5	100	105
Neo Nazi	6	3	31	26	Police Sweep	13	5	110	110
Gaseous Odor	6	1	40	25	Chief of Staff	13	2	120	115
Conservative	6	1	35	35	Internal Homophobia	13	4	125	123
Homo Healer	6	1	35	35	4-Star General	13	5	125	125
Evil Pope	7	7	35	40	Serial Destroyer	13	5	119	125
Panicked Preacher	7	0	40	35	Lead Titan	13	5	125	125
Armed Bandit	7	3	35	42	Giant Lemure	13	5	125	125
Vengeful Cop	7	4	40	30	Hell Basher	13	5	125	175

Legend

Name=name of creature. Level=minimum level creature found on. Atrb=attributes creature has [0=limited to fighting, 1=fight & poison, 2=fight & breath fire, 3=fight & cast Magic, 4=fight & cast Cleric spells, 5=fight & cast Magic or Cleric spells, 6=fight & cast ice shards, 7 = fight & drain levels, 8=anything]. Dmg=damage creature can inflict on you by fighting. Def=number of hits creature has.

Item Appendix

ITEM	TYPE	LEVEL	ATRB	DMG	DEF	ITEM	TYPE	LEVEL	ATRB	DMG	DEF
L Jacket	Defense	2			2	PressOn Nails	Weapon			3	
L Jacket+1		4			3	Nails+1		3		7	
L Jacket+2		6			5	Nails+2		5		14	
L Jacket+3		8			7	Nails+3		7		18	
Empress Jacket		12			15	Silver Nails		9		24	
Apron	Defense				1	Empress Nails		12		50	
Apron+1		1			2	Ring	Rings	1			
Apron+2		4			3	Light Heal		1		200	
Apron+3		5			4	Party Invis		8		7	
Empress Apron		11			10	Wound		1		5	
Mace	Weapon				1	FireBalls		7		2	
Mace+1		1			3	Ice Storm		8		6	
Mace+2		4			5	Eye of Death		10		4	
Mace+3		6			7	Return Home		9		210	
Silver Mace		8			12	Sphere	Spheres				
Empress Mace		12			20	Light Heal		1		200	
Blo Dryer	Weapon				2	Full Heal		8		209	
Blo Dryer+1		2			6	Restore		10		201	
Blo Dryer+2		4			9	Evade		1		8	
Blo Dryer+3		6			12	Raise		11		205	
Gold Blo Dryer		9			18	Lightning Bolt		6		3	
Turbo Blo Dryer		11			24	Light		1		225	
Purse	Weapon				4	Teleport 1		12		112	
Purse+1		3			8	Teleport 2		11		111	
Purse+2		5			15	Teleport 3		10		110	
Purse+3		7			20	Teleport 4		9		109	
Empress Purse		10			28	Teleport 5		8		108	
Tiara	Defense				1	Teleport 6		7		107	
Tiara+1		3			2	Teleport 7		6		106	
Tiara+2		4			5	Teleport 8		5		105	
Tiara+3		7			6	Teleport 9		4		104	
Silver Tiara		10			9	Teleport 10		3		103	
Empress Tiara		12			11	Teleport 11		2		102	
Condom	Defense				1	Teleport 12		1		101	
Condom+1		3			2	Lighter	Accessory	1			
Condom+2		5			3	Magic Vial		1		100	
Condom+3		7			4	Burned Item					
Silver Condom		9			7						
Empress Condom		11			11						

General Legend

Item Name=name of item. Type=defensive, offensive or other. Level=minimum level item can be found on. Atrb=attributes item has when used. Dmg=damage item can inflict on creature. Def=number of hits item protects for.

Attribute Legend. Items will do the following when used:

2=throw fireballs, 3=cast lightning bolts, 4=cast eye of death, 5=cast light wound, 6=cast ice storm, 7=cast Party Invis, 8=evade encounter, 100=mystery attribute, 101 to 112=teleport to different level, 200=cast light heal, 201=restore party spells, 205=raise dead character, 209=cast full heal, 210=return party to castle, 225=cast light spell.

Acknowledgements

This game is dedicated to Gays & Lesbians everywhere, and to Gary Ziebold who never got the chance to see GayBlade.

Table of Contents

System Requirements & Installation	5
Easy Installation Instructions	5
Technical Notes	5
Playing Screen Overview	6
The GayBlade Legend	6
Menu Commands	7
Additional Notes	7
The GayBlade World Overview	8
The Castle Overview	8
Establishments	8
The Training Yard	8
GB Lounge	8
General Store	8
The Guild	9
The Magic Boutique	9
The Clinic	9
The Dungeon Overview	9
Moving in the Dungeon	9
Dungeon Traps	10
Encounters	10
Fighting	10
Parrying	10
Casting Spells in Combat	11
Using Items in Combat	11
Creature's Turn	11
Items	11
Classes of Items	11
Equipping and Unequipping Items	11
Using Items	12
Spells	12
Magic Spells	12
Cleric Spells	13
Treasure	14
Gold	14
Chests	14
Trapped Chests	14
Chest Contents	14
Character Information	15
Type Information:	15
Statistics:	16
If a Character Dies... ..	16
If Your Entire Party Dies... ..	17
Playing Strategy	17
Winning the Game.....	17
Appendix	18
Items	18
Creatures	19

as live ones during encounters.

If you have a Cleric in the Dungeon party, he can cast a Raise spell on the dead character. If the spell is successful, the character comes back to life (you need to re-equip the items), otherwise the character becomes Perm Dead, which means that there is **no chance** of being Raised from dead. *Go up to the Castle and bury the character in the Clinic.*

If Your Entire Party Dies...

There is no chance of recovering any characters or items the characters had if your entire party dies. In other words, you're devoured by the creatures and all the items are picked off by them as well. It's time to start over.

Playing Strategy

- Lighters burn out frequently! Make sure you have plenty of them in reserve. Immediately light one or more as soon as you enter the dungeon. **You will not find any chests or gold without light.**

- Concentrate on building up one character at a time at first. Characters who kill creatures during hand-to-hand combat receive slightly more experience points than those who kill creatures by casting spells.

- Constantly monitor each character's progress by checking gold and experience points needed to advance to the next level in the Guild. Take them to the Guild as soon as they're ready.

- Lower level parties should consist of at least two Muses (or other Magic users). Throw lots of 'Wound' spells at attacking creatures to weaken them, then fight through encounters since you acquire more experience points that way.

- Throw 'Invis On' if you are wanting to go down deep and don't want to waste time (or spells) fighting through unnecessary encounters on higher levels. Throw 'Invis Off' when you have reached the level you want to be at.

- If you have a 'Castle' spell, save it for emergencies! It can immediately teleport you up to the Castle in seconds (cannot be used during encounters).

Winning the Game...

Once you have located the chamber in which the good Empress has been imprisoned, you must still free her. Legend has it that you must choose one of three spheres, but choose wisely for one sphere will destroy Homophobia and the others...?

have in a Dungeon party.

Masters: make great fighters and can cast both Magic and Cleric spells as well as equip any item. Masters are rare to roll.

Statistics:

Hits: are the life force of characters. Maxes out at 250. When your hit points drops to zero, you die.

Level: is the level of the character (how far he has advanced).

Strength: is used in encounters for hand-to-hand combat. The higher your strength, the harder you hit.

Constitution: is used when you have died and a Raise Spell is being cast to bring you back to life. The higher it is, the better chance you have.

Wisdom: is used for determining the potency of Cleric spells.

Intelligence: is used for determining the potency of Magic spells.

Dexterity: is used in conjunction with Strength when in hand-to-hand combat and determines if, once you have swung at a creature, you hit it or not.

Age: shows how old you are.

Experience: displays your accumulated experience. When you have reached such a high level that experience no longer matters, a series of asterix will be displayed instead. Experience points are accumulated by defeating creatures.

Gold: Displays your accumulated gold. When you cannot carry anymore gold, a series of asterix will be displayed instead.

Magic Spells #|#|#|#|: displays (from left to right) the number of level one spells units, level two spell units, level three spell units and level four spell units you have available to cast. The maximum spell units you can have are: '9|7|5|1|1|'

Cleric Spells #|#|#|#|: displays (from left to right) the number of level one spells units, level two spell units, level three spell units and level four spell units you have available to cast. The maximum spell units you can have are: '9|7|5|1|1|'

If a Character Dies...

There are two bad things that can happen to your party members: one is for them to die, the other (and by far worse) is for them to fail a Raise from dead spell. Once a character has died he can no longer do anything. Other members, however, can pick items off his body to use themselves. And creatures, being rather stupid, will attack dead party members as quickly

System Requirements for Macintosh systems:

- 2 Meg of RAM or more.
- A monitor capable of supporting 256 colors/greys.
- Color QuickDraw with System 6.0.5 & above.

Easy Installation Instructions for Macintosh users:

- 1.) Drag "GayBlade Game Folder" from "GB Disk 1" onto your hard disk.
- 2.) Copy all files from "GB Disk 2" into the "GayBlade Game Folder" on your hard disk.
- 3.) Double-click the GayBlade application icon and get ready for exciting adventure!

System Requirements for PCs with Windows 3.1:

- 4 Meg of RAM or more (8 suggested).
- Microsoft Windows 3.1

Easy setup instructions for Window's users:

- 1.) Insert Disk 1 in drive A or B and from the Window's Program Manager, select the FILE menu. Choose RUN.
- 2.) Type A:SETUP or B:SETUP and press ENTER. Follow on-screen instructions.

Technical Notes:

- GayBlade, like other computer games, will not run well with screen savers. We recommend that you turn off your screen saver before playing GayBlade.

For technical problems with GayBlade, contact:

RJBest, Inc.
5214-F Diamond Heights Blvd., Suite 701
San Francisco, CA 94131
(415) 206-1985

PC users may call (800) 237-8195 for specific questions concerning Windows' operation.